


AR-723 (H)

Access Controller

Standard 

Option 



Ingress Protection : IP56 (Optional)

Supports security trigger signal for relay active

Built-in Watchdog to prevent system from hanging

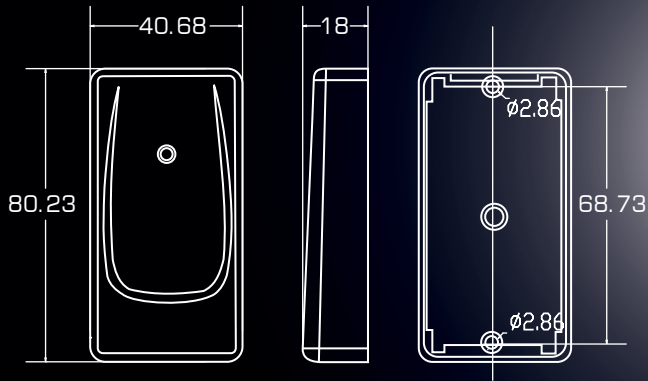
Have the "MASTER CARD" functions, convenient operation

Attach External Keyboard for operating instruction setting

AR-721RB relay output module, Support 4 delay time: 0.1, 3, 6, 9 sec.



Dimensions (mm)



Parking Management



Networking Center Control



Application

Gateway Control



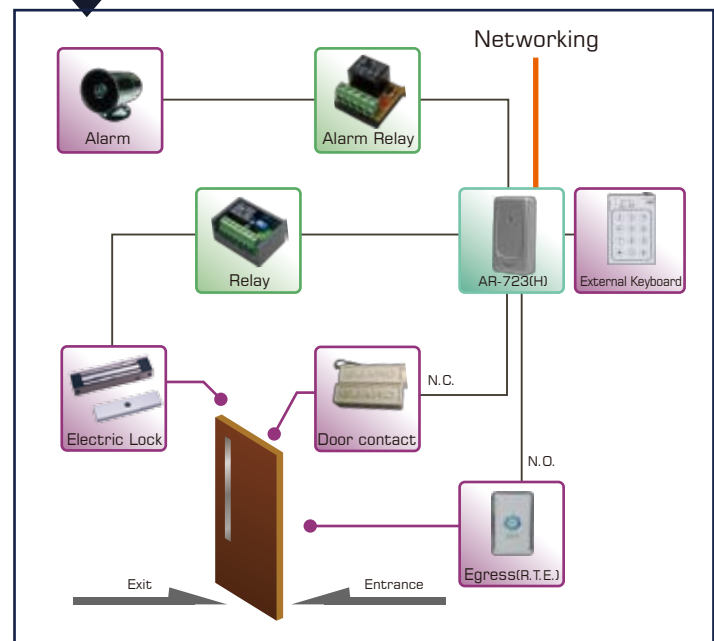
Access Control



Specification

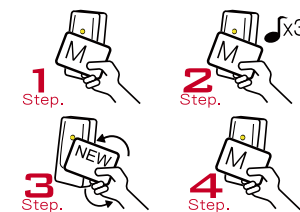
Frequency	125KHz	13.56MHz
Standard	EM Standard	ISO14443A Option ISO15693 DESFire PSAM NFC
Reading Range (Depends on Tags)	5-12cm	2-8cm
Power Supply	9-16VDC	
Power consumption	<1W	
Communication Interface	RS-485	
Baud Rate	9600 bps(N,8,1)	
Temperature	-20°C to +60 °C	
Digital Input	Egress(R.T.E.) / Door contact	
Relay Output	External Relay	
Lock Relay Time	ON/OFF, 0.1-600 Sec.	
Alarm Time	Toggle, 1-600 Sec.	
Tamper Switch	Limit Switch (Form C)	
User Capacity	1,024	
Event log	1,200	
External Reader	1 Wiegand Port	
Anti-pass-back	Yes (M4/M8 Only)	
Lift Control	32 Floors, 1,024 Users	
Serial port	Yes (M4/M8 Only)	
LCD Panel	No	
Transistor Output	Arming LED (or Security trigger signal) / Alarm / Duress	
Ingress Protection	IP56 (Option)	
Indicator	1 Bi-Color LED & 1 Beeper	
Keypad Material	No (Option:AR-WG-KEYBOARD-M)	
Housing Material	ABS	
Time Zone	11/63(Connect to Multi-Door Networking Controller)	
Operation Mode	Standalone/ Networking	
Color	Black / Gray / Silver Option:White/Blue/Green/Yellow/Orange/Red	
Dimensions (mm)	81(L)X43(W)X18(H)	
Weight (g)	40±5	60±5

Diagram of Basic application for single door



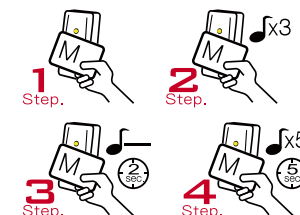
About Master Card (Option)

Adding Tag



1. Present Master Card
2. After 3 short beeps (Access programming mode)
3. Present one new card at a time
4. Present Master Card (Exit programming mode)

Delete All Tags



1. Exit programming mode
 2. After 3 short beeps (Access programming mode)
 3. 1 long warning beep after 2sec.
 4. 5 short beeps after 5 seconds → cards cleared
- P.S. Once MASTER CARD is presented after one warning beep, all card data will be cleared.